

30'+10"/10+60'/20+30' 12.03.2024

30'+10"/10+60'/20+30' C29: Vienna

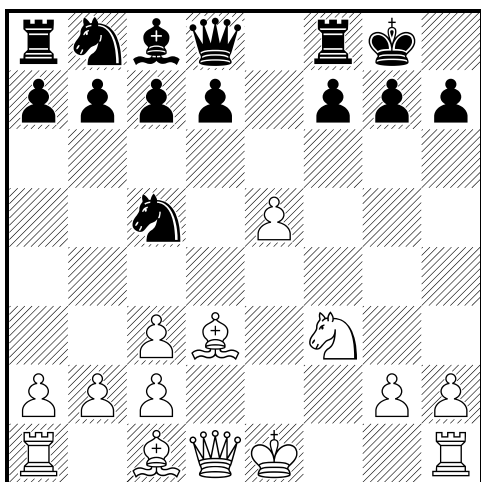
Game: 2...Nf6 3 f4

1.e4 e5 2.Nc3 Nf6 3.f4 Bb4 4.fxe5 Bxc3 5.dxc3 Nxe4 6.Nf3??

White lets it slip away

[Δ 6.Qg4 d5 7.Qxg7+-]**6...0-0??** Allowing further unpleasantness

[6...d5 7.exd6 Nxd6 8.Bg5±]

7.Bd3?![Δ 7.Qd5 keeps an even firmer grip Nc6 8.Bd3 Nxe5 9.Bxe4+- (9.Qxe5?! Re8 10.Qxe4 Rxe4+ 11.Bxe4 d5+-)]**7...Nc5??** Diagram[Δ 7...d5 would save the game 8.exd6 Nf6±]**8.Bxh7+!+- Kxh7 9.Ng5+ Kg8**

[9...Kg6 10.Qg4 d5 11.Ne6+-]

10.Qh5 Re8

[10...Qxg5 the only chance 11.Bxg5 Nc6+-]

11.Qxf7+ Kh8 12.0-0

[12.Qh5+ Kg8 13.Qh7+ Kf8 14.Qh8+ Ke7 15.Qxg7#]

12...Qe7

[12...Qxg5 is not much help 13.Qxe8+ Kh7 14.Rf8 Qxc1+

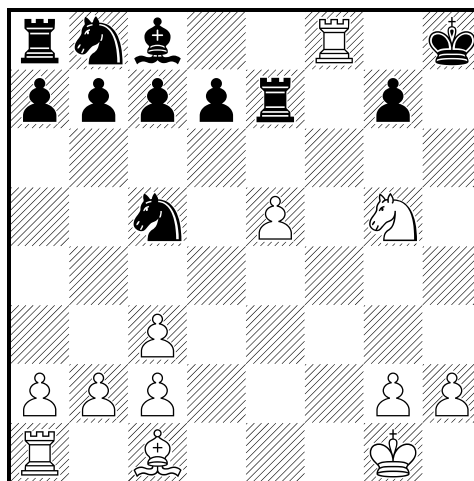
15.Rxc1 Kh6 16.Rf5 g5 17.Qh8+ Kg6 18.Rf6#]

13.Qxe7

[13.Qh5+ Kg8 14.Qh7#]

13...Rxe7

[13...Rg8 doesn't improve anything 14.Rf4 Nc6 15.Rh4#]

14.Rf8# Diagram

1-0